

JASNA ROCHESTER

Jane Austen Society of North America
Rochester Chapter

<http://jasnaroc.wordpress.com>



Welcome back! JASNA Rochester comes back from our summer hiatus with our first meeting on September 18 at the Pittsford Barnes and Noble. See page 3 of this newsletter for a detailed schedule of meetings. JASNA's 2010 focus is *Northanger Abbey* – so re-read before our first meeting.

FALL 2010

Quick schedule



9/18-*Northanger Abbey*



10/16-JA and Money



11/20-Post AGM Discussion



12/11 JA Birthday Lunch

"What a strange, unaccountable character!"

Writers & Books Course on Jane Austen – and a Pepys Day

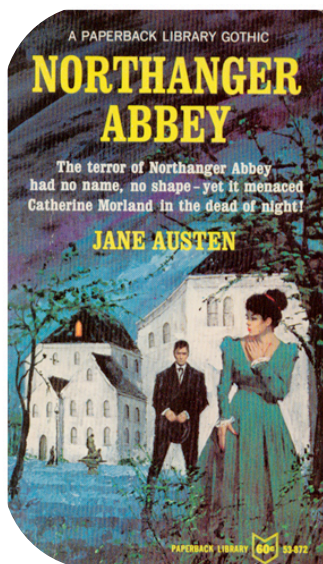
Edith Lank will teach "Jane Austen's Life and Works" at Rochester's [Writers and Books](#) on seven Thursdays from Sept. 30-Nov. 11. Cost is \$142 for W&B members and \$149 for the general public. Edith is also giving a talk on Samuel Pepys' diary

at 1:00 p.m. on Saturday October 16 at W&B–cost is \$39/\$43. This is a B&N JASNA meeting day–but we won't blame you for taking the mini-Pepys course!

September 18 meeting – *Northanger Abbey*

Marie Sprayberry, Regional Coordinator for JASNA Syracuse, will take the lead for our discussion of *Northanger Abbey* (Celia will be out of town).

What do you like about this early novel of Jane Austen? Some subsequent publishers obviously didn't understand her parody, as evidenced by this 1965 gothic book cover.



The wind roared down the chimney as the rain beat in torrents against the windows, and every nerve-shattering sound seemed to speak the awfulness of her situation.

While the storm raged, there was an increase in tempo of other frightening sounds, more terrific even than the wind, which howled at intervals on her startled ear. In one moment the very curtains of her bed were startled into motion, and at another the lock of her door was agitated, as if by the attempt of somebody to enter. Hollow murmurs seemed to creep along the gallery and more than once her blood was chilled by the sound of a shrill, distant scream.



Paperback Library Edition
New York, 1965.

**A HOLIDAY ENDS AS TERROR BEGINS—
STALKING CATHERINE MORLAND FROM
EVERY SHADOWY CORNER OF NORTH-
ANGER ABBEY!**

Delighted to be a house guest at Northanger Abbey—ancestral home of Henry Tilney, the man she loves—Catherine anticipated a time of happiness. Soon, however, the very atmosphere of the old mansion menaced her with strange noises, weird suspicions.

What was the mystery surrounding the death of Henry's mother? Was the family concealing a terrible secret within the elegant rooms of the Abbey?

Could Catherine trust her love? Would Henry tell her the truth or was he, too, involved in the evil of the house—an evil which threatened to enmesh Catherine herself.

**FAR FROM HOME AND CLOSE TO DANGER,
CATHERINE HAS NOWHERE TO TURN!**

Have you visited our website?

When you visit JASNA Rochester's website, you'll find our schedule as well as news on regional events and events just beyond our area.

We also publish a list of interesting Austen websites.

We include a link to the Country Dancers of Rochester—yes, you *can* dance like Jane Austen!



<http://jasnaroc.wordpress.com>

JASNA Rochester Fall 2010 Schedule

JASNA Rochester meets on the third Saturday of the month from September to May. Most meetings are at 1:00 p.m. in the second-floor Community Room of the Barnes and Noble Bookstore in Pittsford Plaza, 3349 Monroe Avenue, Rochester, NY 14618. Unless otherwise indicated, programs are free and open to the public.

September 18, 2010: *Northanger Abbey* discussion, led by Marie Sprayberry (Celia is away). (B&N, 1 p.m.)

October 16, 2010: Money and Jane Austen. We will discuss Edward Copeland's article "[Money](#)" from the *Cambridge Companion* to Jane Austen. You can read most of the article through Google Books (search for Edward Copeland Austen Money). Everyone should bring in interesting passages from the novels that reference money. You can also buy the *Cambridge Companion* for Amazon's Kindle for about \$15 (\$26 paperback). (B&N, 1 p.m.)

November 20, 2010: JASNA members who attended the Annual General Meeting in Portland, Oregon will report on "[Jane Austen and the Abbey: Mystery, Mayhem and Muslin in Portland.](#)" (B&N, 1 p.m.)

December 11, 2010 (Saturday 11:30 a.m.): Jane Austen birthday lunch with JASNA Traveling Lecturer, Professor Juliette Wells. At the Chatterbox Club 25 N. Goodman St. Rochester, NY 14607-1501 —hosted by JASNA member Sharon Buzard. **Cost: \$25, by reservation with JASNA Rochester only.**

Juliette Wells is an associate professor of English at Manhattanville College, where she regularly teaches courses on Jane Austen. A frequent breakout presenter at AGMs and in her home region (New York), she is the author of articles in *Persuasions* and [Persuasions On-Line](#) as well as a variety of book chapters on Austen's novels and cultural legacy. Her research into Jane Austen's popularity today has been sponsored by JASNA's International Visitor Program (2009) and Goucher College's Burke Austen Scholar-in-Residence program (2009-2010).



From the New York Times Magazine... October 17, 1999

It Takes All Kinds; Jane Austen: The Cool Artist

By Charles McGrath

There are only two known likenesses of Jane Austen, both by her older sister, Cassandra. In one her back is turned, so that we mostly see her bonnet; in the other she is poker-faced and looking askance. "Of events her life was singularly barren," her nephew claimed, and her letters, or those that her family didn't burn, reveal almost nothing of the person who wrote them. Yet the evidence suggests that Austen's life was full of inner drama. She experienced maternal rejection and sibling rivalry; she was unhappy in love and had trouble with relationships; she suffered from writer's block and bouts of depression. And her novels powerfully suggest both a world and a personality that now seems remarkably familiar. Under that bonnet and behind those vacant hazel eyes there burns the first modern sensibility.

It's a sensibility, for one thing, that's fraught with our kind of financial anxiety. Unlike Defoe or Dickens, Austen isn't concerned with extremes of wealth or poverty. What interests her is the way that money underpins the social fabric of a middle class that is otherwise precariously unstable. Money for Austen is both necessary and vulgar, and for that reason it's also sexy. Austen's other great insight is that in such a highly wrought society, the self is necessarily self-conscious and provisional. In the novelists she grew up on, Fielding and Richardson, character is fate: you are who you were born to be. In Austen, who you are is a role you play. (Discomfort with this recognition may account for why, in Austen's oddest and least popular novel, "Mansfield Park," Fanny Price gets so worked up over the issue of amateur theatricals; it's more playacting than she can handle.) Austen's characters, even the most clearheaded and authentic, like Elizabeth Bennet and Elinor Dashwood, are always acting, saying less or other than they mean; and in such a treacherous arena, where a single word or gesture can mean everything or nothing at all, it's not just poor Emma Woodhouse but apparently sensible people like Anne Elliot who are often clueless.

Austen's world (which is to say our world) would be unendurable if she weren't so funny about it, and this, of course, is her most essential invention of all -- her encompassing irony. It's a matter not just of shrewd social observation but also of something brand-new, an ability to stand apart from life even as it's being lived, and a quicksilver narrative technique that puts us almost inside a character's head and then in an instant, with just a word sometimes, darts away to someplace else. Of herself, Austen gives away nothing directly; she's everywhere and nowhere. She was the original master of what we now call "cool."

JANE AUSTEN FILM ADAPTATIONS



Aisha

The latest "Bollywood" adaptation of a Jane Austen novel is *Aisha*, based on *Emma* but set in modern-day Dehli. Watch for her sister's brother-in-law, Arjun (the "Mr. Knightley" character) - affectionate and funny, without Aisha noticing.



From Prada to Nada

Due out in 2011, *From Prada to Nada* is a loose adaptation of *Sense and Sensibility*. Two sisters suffer economic distress upon the unexpected death of their father, and they must move from Beverly Hills (think Norland Estate) to East Los Angeles.

Who is JASNA Rochester?

JASNA Rochester is a regional group within the national organization, the Jane Austen Society of North America (<http://www.jasna.org>). Because we meet in the Community Room of the Pittsford Barnes and Noble, all of our regular meetings are open to the public. Membership information for JASNA is printed on the last page of this newsletter.

Regular participants with the Rochester Chapter of JASNA are urged to make a \$5/year contribution to the chapter to support newsletter production, publicity, and activities. Please bring Rochester contributions to a meeting or mail to Rollie Abkowitz, 1198 Gatestone Circle, Webster, NY 14580.

LOCAL LEADERS

Celia Easton is the Rochester Regional Coordinator. You can reach her through email at easton@geneseo.edu. Her phone number is (585) 442-5716. Her address is 488 Harvard St., Rochester, NY 14607.

Rollie Abkowitz is JASNA Rochester's treasurer.

Kathy Whitbeck is JASNA-Rochester's registrar. Kathy can make sure you have a name tag or record your email/address to make sure you receive a newsletter.

A. Marie Sprayberry and Lisa Brown, whom you'll see pretty regularly at JASNA Rochester meetings, head the Syracuse Chapter of JASNA (Marie is the RC).



Have you heard about the Jane Austen Singing School for Young Ladies? They are a choral group begun in Skaneateles, NY by Joanna Manring (see <http://www.joannasoprano.com/special-projects>).

JOINING JASNA

MEMBERSHIP INFORMATION

If you wish to join the Jane Austen Society of North America – and receive national newsletter and the excellent annual journal, *Persuasions* (a full book of essays on Austen), print out membership information from <http://www.jasna.org> or send in the following to **Bobbie Gay 7230 N. San Blas Drive Tucson AZ 85704**. You must be a member of JASNA to attend Annual General Meetings.

Type of membership	U.S.A.
Student annual (full-time)	US\$18
Individual annual	US\$30
Family annual**	US\$45
Sustaining annual***	US\$60
Individual life	US\$350
Convert to Family life****	US\$150
Family life**	US\$500

For further questions on membership, please call 1-800-836-3911 or email the US/International Membership Secretary, Bobbie Gay, <mailto:hettyb@comcast.net> or the Canadian Membership Secretary, Nancy Stokes, members-canada@jasna.org

Name _____

Second Name (if family membership) _____

Address _____

City, State/Province, Zip _____

Primary Phone _____ Secondary Phone _____

Email Address _____

Membership category: Individual Student Family Sustaining Life Convert to Family Life Family Life

Please check all that apply: New member Renewal Address change Contribution This is a gift; please send the member a gift card from _____

Dues (refer to chart above) \$ _____

I also wish to make a contribution* to:

JASNA or JASNA/Canada (circle one) \$ _____

Jane Austen-related Churches \$ _____

Jane Austen's House \$ _____

Total \$ _____

* JASNA is a section 501(c)(3) tax-exempt organization. US and International members contributing to JASNA or the Austen sites listed above will receive a US charitable contribution tax receipt. For Canadian tax purposes, contributions are deductible only if designated for JASNA/Canada; a tax receipt will be issued for those donations.